

CEF27NA3

**DURACELL®**  
RECHARGEABLE



**QUALITY GUARANTEE:** DURACELL offers a limited 5-year guarantee against defects due to faulty materials or workmanship and guarantees the performance of each DURACELL charger for 5 years from date of purchase. If found to be defective, this guarantee does not apply to damage from misuse or abuse beyond normal usage. This guarantee gives you specific legal rights, and you may also have other rights, which may vary by jurisdiction. Should any battery be damaged by this charger due to defects in the charger arising from faulty materials or workmanship, DURACELL will repair or replace (at our option) the battery, provided both charger and battery usage instructions have been followed. If you would like additional information on Duracell Rechargeable Batteries call 1-800-551-2355 (9:00AM-5:00PM E.S.T.).

**BATTERY CAUTION:** Keep batteries away from children. If swallowed, consult a physician at once. For information on treatment, call 1 (800) 498-8666. We recommend charging DURACELL NiMH rechargeable batteries only. Do not attempt to charge non-rechargeable batteries. Misuse could cause batteries to rupture, causing personal injury or damage. Indoor use only. Dry location use only. Risk of electric shock. Never disassemble or alter any part of the charger or batteries. Charger or batteries may become hot during charging and will cool down when charging is complete. Not recommended for use by children.

**IMPORTANT BATTERY CHARGER SAFETY INSTRUCTIONS:**

**DANGER-TO REDUCE THE RISK OF FIRE OR ELECTRIC SHOCK, CAREFULLY FOLLOW THESE INSTRUCTIONS**

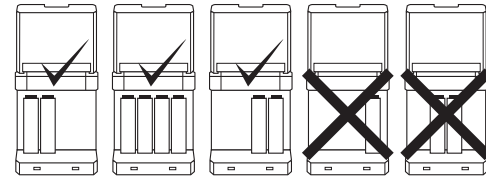
When using electrical products, basic precautions should always be practiced including the following:

1. **SAVE THESE INSTRUCTIONS** - This sheet contains important safety and operating instructions for this charger.
2. Before using battery charger read all instructions and caution marking on the charger, battery, and device using battery.
3. **CAUTION** - To reduce the risk of injury, charge only NiMH rechargeable batteries. Do not charge any disposable batteries such as Alkaline, Zinc Carbon, Lithium, NiOOH, or any batteries other than NiMH, as they may burst causing personal injury and damage. Keep batteries away from fire or explosion may occur. For proper insertion, please observe polarity indicators (+/-). For connection to a supply not in the U.S.A., use an attachment plug adapter of the proper configuration for the power outlet.
4. For indoor use only. Do not expose to rain or snow. Do not use in a bathroom.
5. Do not place in or near water or extreme heat.
6. Do not operate charger with damaged plug.
7. Do not operate charger if it has been damaged in any way.
8. Do not disassemble charger. Disassembly may result in a risk of electric shock or fire.
9. To reduce the risk of electric shock, unplug the charger from the outlet when not in use.
10. This appliance can be used by children aged from 8 years and above and persons with reduced physical, sensory or mental capabilities or lack of experience and knowledge if they have been given supervision or instruction concerning use of the appliance in a safe way and understand the hazards involved. Children shall not play with the appliance. Cleaning and user maintenance shall not be made by children without supervision.
11. This power unit is intended to be correctly oriented in a vertical or floor mount position.
12. Never use an extension cord or any attachment not recommended by DURACELL, otherwise this may result in a risk of fire, electric shock or injury to persons.

**CHARGING INSTRUCTIONS:**

- 1) **Open**
    - Grip the charger on each side, and open it until it locks into place.
  - 2) **Load NiMH batteries into the Charger.**
    - Insert batteries into charging slots with the (+) and (-) ends oriented correctly.
- To charge either 2 or 4 AA/AAA use the following positions:**

**Position Chart**



- To use the fast charge mode, insert 2 AA or 2 AAA batteries in the appropriate position. Fast charge mode only works for 2 AA or 2 AAA batteries.
- If only 1 AA and only 1 AAA battery are placed into the charger, they will not charge.

3) **Plug in the charger**

- Lift the AC plug until the prongs snap into place.
- Plug into an AC outlet.

4) **CHARGING/LED INDICATION**

- LED lights will cycle through RED and then GREEN when batteries are first inserted correctly and charger is plugged in.
- LED lights will turn RED when batteries are charging.
- LED lights will BLINK GREEN when the batteries are ready to use.
- LED lights will turn GREEN when the batteries become charged.
- LED lights will BLINK RED\* if abnormal conditions are detected during charging, charging will stop.

LED Battery Health Indicator	
Condition	LED Color
Charging	Solid Red
Ready for Use	Blinking Green
Charged	Solid Green
Error/Bad Battery	Blinking Red

\* If Blinking Red LED is encountered, first ensure you are attempting to charge a NiMH AA or AAA battery. If yes, remove and reinsert the NiMH battery. If battery has become heated, it may be damaged. Insert a new NiMH battery.

5) **STORAGE**

- Unplug the charger and remove the batteries, once charging is complete.
- **Fold the prongs back into the charger until flat.**
- Grip the charger sides and close until locks in place.

**NOTES & USAGE TIPS:**

1. Batteries will automatically stop charging when full charge is reached.
2. Safety protections will prevent battery from overcharging.
3. Batteries that are new or have been stored for an extended period may need to be charged and used 2-3 times before optimal charge performance is achieved.
4. New non-pre-charged batteries may require charging before use.
5. This charger is capable of accepting 100-240 V AC, 50/60 Hz and, therefore, can be used overseas with a corresponding regional plug converter.
6. If battery is fully charged and then reinserted right away into the charger, the fault Red Blinking LED indicator may occur since the battery is already fully charged.
7. Charging time may vary based on battery capacity (mAh).

**CORRECT DISPOSAL OF THIS PRODUCT**

Please follow any local requirements to recycle used electronic appliances and rechargeable batteries.



**FCC COMPLIANCE:**

This device complies with Part 15 of the FCC Rules and Class B Digital Device limits which provide protection against interference in a residential installation. Operation is subject to the following two conditions: (1) This device may not cause harmful interference, and (2) this device must accept any interference received, including interference that may cause undesired operation.

The device uses and radiates radio frequency energy, and if not installed and used in accordance with the instructions or is modified, may cause interference to radio/TV communications in which the manufacturer is not responsible. Should interference occur, correct by connecting device to an outlet on a different circuit.

© 2018 DURACELL DURACELL, Bethel, CT 06801 www.duracell.com  
Charger made in China • Batteries made in Japan

1001023